

Product Information**antibody clonality** polyclonal**raised in** rabbit**purity** serum**quantity** 200 µl**antibody form** lyophilized

Add 200 µl of sterile water for reconstitution. Spin tubes briefly prior to opening to avoid any losses that might occur from liquid or lyophilized material adhering to the cap or sides of the tubes.

background | Ferritin is a main intracellular iron storage protein which is keeping iron in a soluble and non toxic form. It is a globular protein complex consisting of 24 subunits.

immunogen | synthetic peptide (derived from (*Chlamydomonas reinhardtii* ferritin1 protein sequence, accession number Q8LRU1) conjugated to KLH

reference | Long et al, Genetics, Vol. 179, 137-147, May 2008

storage instructions

Store lyophilized/reconstituted at -20°C (6 months) or -80°C (long term storage/years). Please, avoid freezing and thawing of reconstituted antibodies. Make aliquots instead.

Application Information

western blot | 1:1000 on 26 µg protein/lane with secondary AB 1:5000 and ECL standard detection

expected / apparent MW: 27 / 25 kDa for *Chlamydomonas reinhardtii*

confirmed reactivity | *Chlamydomonas reinhardtii*

predicted reactivity | *Chlamydomonas reinhardtii*

not reactive in | higher plants

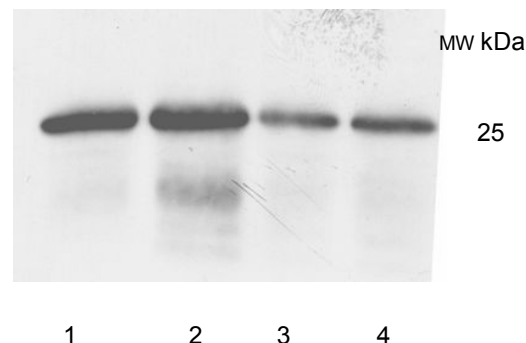


figure: | 26 µg of total protein from *Chlamydomonas reinhardtii* total cell extract was separated on polyacrylamide gel and blotted on PVDF membrane. 0.2 µM of Fe was present in the medium (1); 1 µM of Fe was present in the medium (2); 20 µM of Fe was present in the medium (3); 200 µM of Fe was present in the medium (4); Filters were blocked (1h), incubated with 1: 000 Anti-ferritin1 antibodies (1h) followed by incubation with 1: 5000 secondary anti-rabbit (1h) coupled with HRP and visualization with Supersignal west femto maximum sensitivity (Pierce)

Antibodies are intended for research use only and not for diagnostic or therapeutic use. For applications or usage on species others than stated above, please contact support@agrisera.com